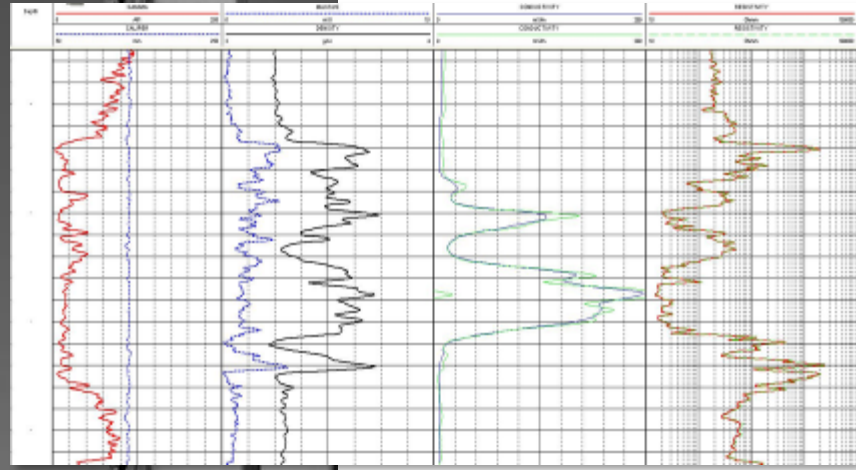
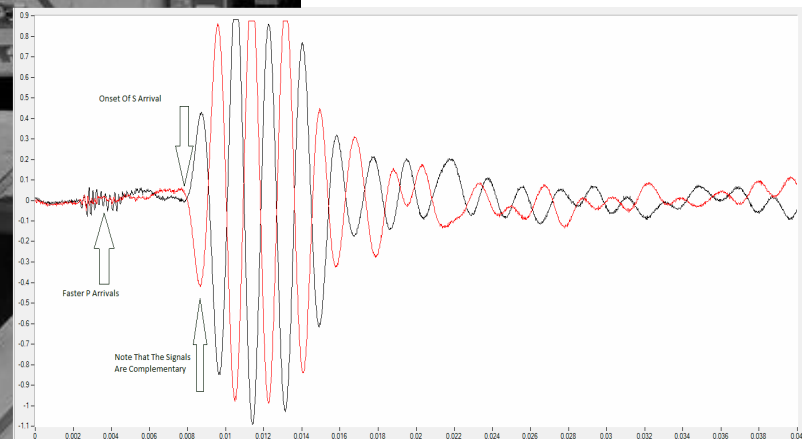


Borehole geophysical logging, televiewers, video camera, memory, and survey systems*



Borehole geophysical tools for

- Mineral Exploration
- Resource Evaluation
- Formation Characterization
- Groundwater Investigation
- Hydrology
- Ground Engineering
- Gyro Navigation

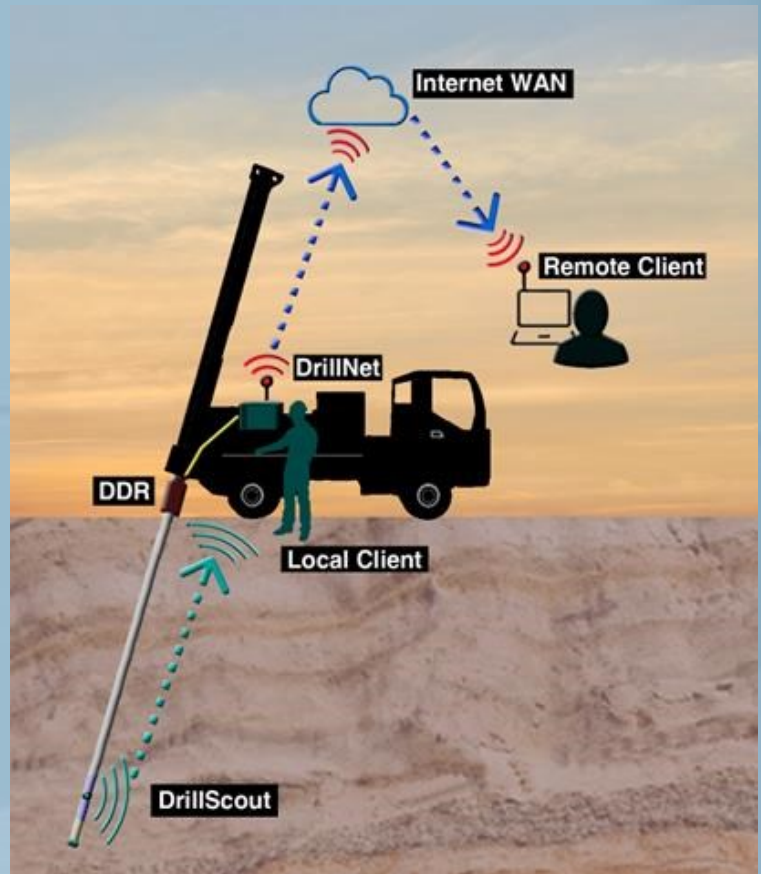




XTHERA Drilling Dynamics Rod and Logging While Drilling Systems

Main features:

- Remote monitoring of rig status and GPS location
- Measurement of drilling parameters from a sensors' sub on top of the rod string
- Real-time, local and remote (via cellular network) monitoring of drilling rig performance and changes in formation rock mechanical properties
- Geophysical logging and bit direction sensors in a bottom hole assembly, above the bit
- Local and remote monitoring of real-time changes in geology and drilling direction
- Retrievable downhole sensors pack

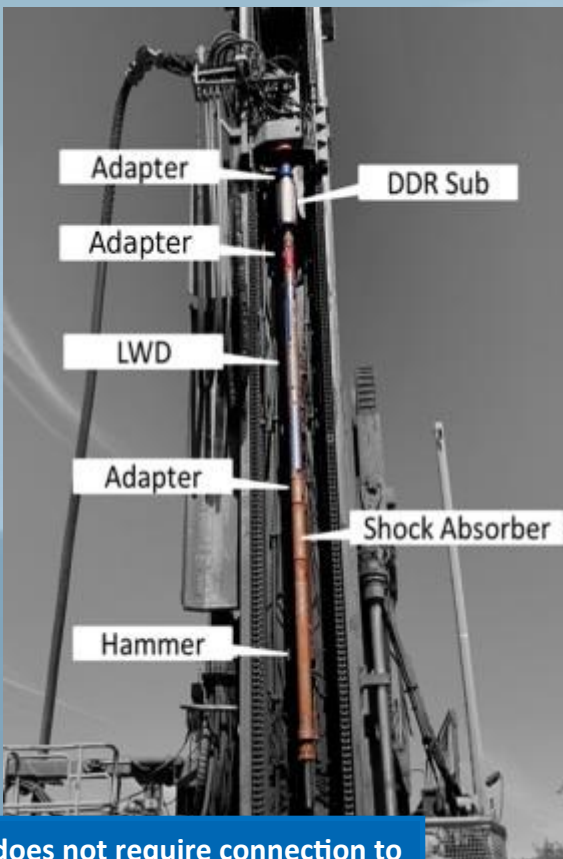


DrillNet – Surface System

DDR – Drilling Dynamics Rod

DrillScout – Logging while RC drilling

Thru-Bit Logging (TBL) – Diamond Drilling



DDR does not require connection to the rig hydraulics

